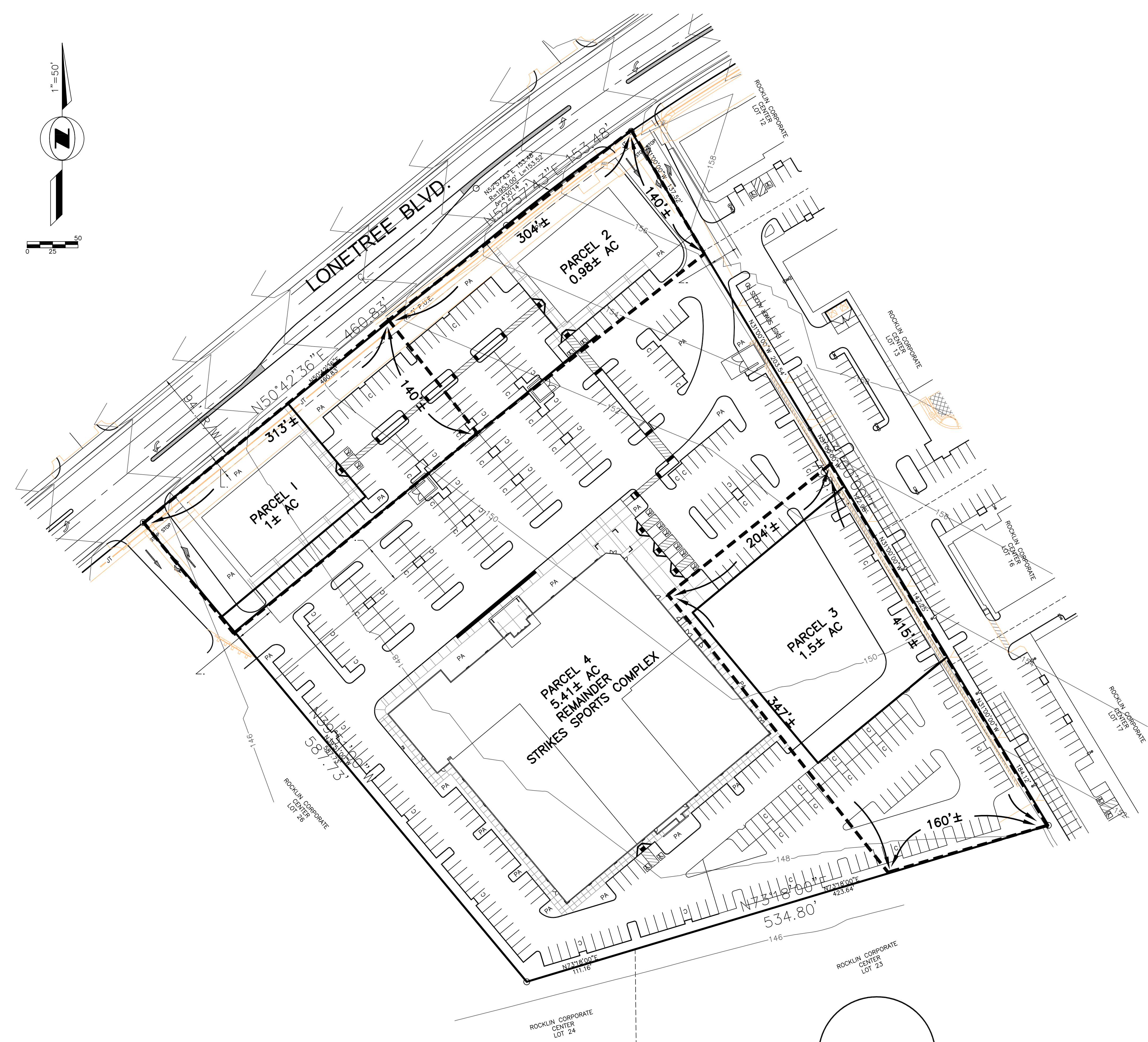


VICINITY MAP
NTS

TENTATIVE PARCEL MAP FOR :
5681 LONETREE BLVD.
LOT 27 ROCKLIN CORPORATE CENTER
CITY OF ROCKLIN, PLACER COUNTY CA.



OWNER: Aspen Ave. LLC
9970 Hadleigh Dr.
Granite Bay, Ca. 95746
PHONE: 916-752-7592

APPLICANT/ENGINEER: MJM ENGINEERING
6105 SEVEN CEDARS PL
GRANITE BAY, CA. 95746
PHONE: 916-791-2131
017-284-017

A.P.N. AREA
EXISTING ZONING
PROPOSED ZONING

PROPOSED USE
EXISTING USE
PROPOSED IMPROVEMENTS
WATER SUPPLY
SEWAGE DISPOSAL
STORM DRAINAGE
FIRE PROTECTION
SCHOOL DISTRICT
PARK DIST.
ELECTRICITY
GAS
TELEPHONE

PARCEL DESCRIPTION

STAFORD RANC GDP, PD-IP
STRIKES SPORTS COMPLEX
CITY OF ROCKLIN STANDARDS
PLACER COUNTY WATER AGENCY
SOUTH PLACER MUNICIPAL
CITY OF ROCKLIN
CITY OF ROCKLIN
CITY OF ROCKLIN PARK & RECREATION
DISTRICT
SMUD
PG&E
AT&T

LOT 27 ROCKLIN CORPORATE CENTER
Z BM 90

LEGEND

- STORM DRAIN PIPE & SIZE
- SANITARY SEWER PIPE & SIZE
- DOMESTIC WATER PIPE & SIZE
- EXIST. FENCE
- EXIST. CONTOUR
- EXIST. TREE
- STREET CENTER LINE
- RIGHT OF WAY
- EDGE OF PAVEMENT
- PUBLIC UTILITY EASEMENT
- SANIT SEWER MANHOLE
- STORM DRAIN MANHOLE
- FIRE HYDRANT

APN: 017-284-017

Revisions	No.	DESCRIPTION	Appr. By:	Date	BENCH MARK	
					B.M. XXXX	ELEV. XX.XX
					XXXXXX	

Submitted By:

John Masha, R.C.E. 30660

MJM ENGINEERING
6105 Seven Cedars Pl.
Granite Bay, Ca. 95746
Tel. (916) 791-2131
mjasha@att.net

TENTATIVE PARCEL MAP FOR
5681 LONETREE BLVD.
City of Rocklin , California

Scale: 1"=50'	Drawn By: MJM	SHEET NO. 1 OF 1
	Checked By: MJM	
	Date: Nov. 2017	
	Job No. 017-095	